



**Next
Gen
EU**

LUXEMBOURG'S RECOVERY AND RESILIENCE PLAN

#NEXTGENEU | FEBRUARY 2024

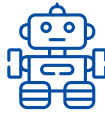
KEY FIGURES

EUR 83 million in grants
0.11 % of GDP¹

>39% value of **payments requested**
*corresponding to
46 % of milestones/targets*



Climate Target
69%



Digital Target
30%



Social Spending
37%

WHAT ARE THE MAIN CHARACTERISTICS OF THE LUXEMBOURG PLAN?

GREEN

69% dedicated to green objectives; an important contribution to Luxembourg's fight against climate change.

INNOVATIVE

Innovative initiatives including new collaborative methods with stakeholders to design policy measures and support for the development and deployment of new technologies.

COMPREHENSIVE

The plan brings together measures across different sectors of the economy and society, acting to improve conditions in relation to housing, the environment, public services, and the labour market, among other areas.

¹ Based on GDP in current prices for 2021.

HOW DOES THE LUXEMBOURG PLAN HELP CITIZENS?

It helps improve people's **quality of life** by ensuring more **affordable housing and nature protection** in municipalities, better **public services on their mobile phones**, and addresses skills shortages by providing **access to relevant training for workers**.

FLAGSHIP EXAMPLES

Development of MyGuichet app for better online services



The Plan helps develop the **e-government mobile phone app** MyGuichet:

- ▶ It is now available to all people in Luxembourg;
- ▶ The number of services in the app is increasing;
- ▶ Virtual appointments between citizens and public administration for various administrative procedures will be possible.

Nature protection in municipalities



Naturpakt is a government scheme supporting action by municipalities to **protect the environment and biodiversity**.

Municipalities which sign a 'Naturpakt contract' receive the assistance of an advisor and a yearly participation subsidy.

Citizens enjoy the benefits of a better-protected environment in their area.

HOW DOES THE LUXEMBOURG PLAN **HELP BUSINESSES?**

It tackles important challenges for businesses' competitiveness, including **skills shortages** and **greener transport**.

FLAGSHIP EXAMPLES

Skilled workforce



Given the difficulties to recruit workers in Luxembourg, the Plan helps **prepare the workforce for labour market needs**:

- ▶ In a consultative process with stakeholders and experts, the National Skills Strategy has been developed;
- ▶ More than 400 jobseekers completed training supported by the Plan;
- ▶ The IT system of the employment agency is being upgraded to better serve users.

Electric car chargers



The Plan provides financial assistance to enterprises that install **charging points for electric vehicles**, both publicly accessible and for their own needs.

It helps create a dense network of charging points for electric vehicles across Luxembourg, contributing to the decarbonisation of the economy and helping businesses green their own practices.

HOW DOES THE LUXEMBOURG PLAN **STRENGTHEN OUR UNION?**

It adds to the **quantum communication infrastructure** of the Union and strengthens the **fight against money laundering and terrorist financing**.

FLAGSHIP EXAMPLES

Quantum communication technology



The Plan supports **innovation in quantum communications** with the aim to integrate the national infrastructure into the EuroQCI project. It enhances security of sensitive data communication.

The Plan helped establish a lab for quantum communications. It supports testing the connections through terrestrial and satellite networks.

Fight against money laundering and terrorist financing



The Plan strengthens the **fight against money laundering and terrorist financing** by:

- ▶ Reinforcing relevant provisions applicable to professionals providing services to companies and trusts, and investment services;
- ▶ Committing to a thorough review to identify, assess and understand the related risks.

For more information: [Luxembourg's recovery and resilience plan — European Commission \(europa.eu\)](https://european-council.europa.eu/media/en/press-articles/2024/05/2024051401_en.pdf)