

EUROPE'S BUDGET

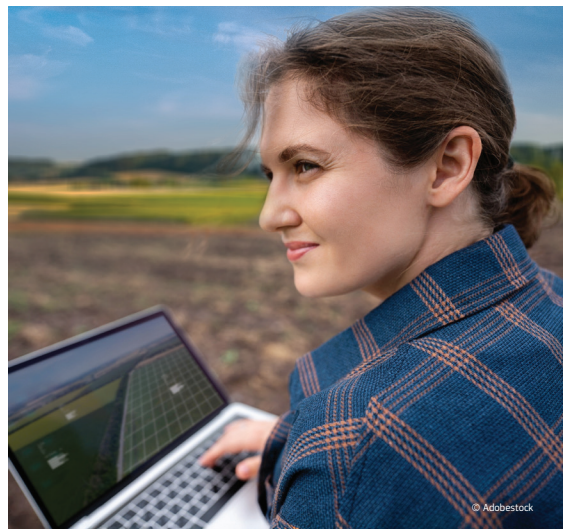
For a resilient, competitive and sustainable EU agriculture

JULY 2025

Food security, agriculture and rural areas remain a priority for funding under the next EU budget 2028-2034. The Common Agricultural Policy (CAP) will continue to play a central role in ensuring the EU's strategic autonomy while supporting farmers and rural communities across Europe.

Why is this a priority?

- To ensure **450 million EU citizens** have access to **affordable, safe** and **high-quality food** every day.
- **To support EU farmers by providing stability and predictability** in a sector facing changing geopolitical situations, persistent structural challenges (ie. generational renewal) and extreme weather events.
- To foster **prosperous** and **well-connected rural areas**.
- To preserve **EU natural resources** by encouraging **sustainable farming practices** that protect biodiversity and help to cope with the effects of climate change.



What is the Commission proposing?

- **A CAP with simpler and more flexible rules:** a single rulebook for the CAP, combined with new streamlined payments, will reduce the burden for both farmers and administrations.
- **A fair and more targeted CAP:** the new CAP will include fairer distribution of funds to better support the diversity of the EU farming sector.
- **A CAP which facilitates synergies** with other policies to achieve a stronger impact on EU agriculture and rural areas.

A central role in National and Regional Partnership Plans

- Support to agriculture and rural areas will be delivered through the new National and Regional Partnership Plans — bringing key EU funding tools under one roof.
- Income support for farmers is ringfenced, ensuring continued stability and predictability.
- Closer integration of cohesion, social and rural development funding will deliver more coordinated investment in rural infrastructure, services, innovation and sustainability.

What does it mean in financial terms?

- Total EU budget 2028-2034 for the **National and Regional Partnership Plans** is **EUR 865 billion**
- Ringfenced **income support for farmers** amounts to **EUR 300 billion**
- **Unity Safety Net** (within the EU Facility) of **EUR 900 million per year** for a total of **EUR 6.3 billion**
- A new approach setting minimum and maximum amounts per hectare making hectare-based payment more uniform among Member States.
- Synergies with other policies
- The new European Competitiveness Fund and the EU Research Framework Programme will foster the competitiveness, sustainability, and resilience of the agriculture, forestry, rural and coastal areas.

How will the budget make a difference?

- Ringfenced amounts for farmers' income support within the National and Regional Partnership Plans will provide a fair standard of living.
- Simpler funding rules for agriculture and rural communities will make it easier to address societal and environmental challenges.
- Synergies and joint programming will tackle investment needs, especially in rural areas, in a more integrated and comprehensive manner.
- Young and new farmers will receive high support including a "starter pack" to accompany them when launching.

