



**NEXT
GEN
EU**

LITHUANIA'S RECOVERY AND RESILIENCE PLAN

#NEXTGENEU | FEBRUARY 2024

KEY FIGURES

EUR 2.3 billion

in grants
4.1 % of GDP¹

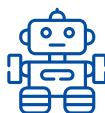
EUR 1.55 billion

in loans

>35 % value
of **payments requested**
corresponding to
17% of milestones/targets



Climate Target
37.4 %



Digital Target
23.3 %



Social Spending
21 %

WHAT ARE THE MAIN CHARACTERISTICS OF THE LITHUANIAN PLAN?

BALANCED

A variety of measures to help businesses and citizens, improve public services and speed up the green and digital transition in Lithuania

SMART

Actions to digitalise the public and private sectors, support innovation and research, and boost growing companies' access to finance.

FUTURE ORIENTED

Reforms and investments for inclusive high-quality education for youth, reskilling and lifelong learning for adults.

¹ Based on GDP in current prices for 2021.

HOW DOES THE LITHUANIAN PLAN HELP CITIZENS?

It helps improve people's **quality of life**, providing more accessible and effective **healthcare**, enabling quality and inclusive **education and reskilling**.

FLAGSHIP EXAMPLES

Skilled workforce for a high value-added and green economy



To accelerate the **digital and green transition** and **create more well-paid jobs**, the Plan offers:

- ▶ High-quality training in digital and other skills for almost 20,000 participants. Out of almost 6,000 trained participants, 91.6% found new employment or have started a new business;
- ▶ Support for the creation of 1,325 jobs that contribute to the twin transition and circular economy.

A high-quality and inclusive school system (Millennium School Programme)



In Lithuania, students from rural areas or a disadvantaged background underperform against their peers. Thanks to the implementation of the Plan, **children will gain better access to high-quality schools regardless of their background**, with:

- ▶ At least 80% of the Lithuanian municipalities involved across the country;
- ▶ EUR 210 million investment to improve school infrastructure and teachers' competencies.

HOW DOES THE LITHUANIAN PLAN HELP BUSINESSES?

It fosters **business resilience and competitiveness**, by increasing the take-up of **clean energy** and improving **business-science cooperation**.

FLAGSHIP EXAMPLES

Empowering businesses to generate renewable electricity



Lithuania imports two-thirds of the electricity it needs and is vulnerable to energy price shocks. To increase its energy independence, the Plan **supports businesses and citizens**, with:

- ▶ EUR 550 million to provide **finance** for companies to build renewable energy power plants;
- ▶ Subsidies to businesses, communities and farmers to generate 225 megawatts of wind and solar energy.

Fostering business and science cooperation



The Plan promotes a **new approach** for business and science cooperation to strengthen Lithuania's smart specialisation in innovative areas:

- ▶ Three business and science consortia will be supported to establish excellence centres, perform joint research and development;
- ▶ At least 21 R&D projects on gene editing, eco-technologies and cybersecurity will be completed, resulting in new products, technologies and spin-offs.

HOW DOES THE LITHUANIAN PLAN STRENGTHEN OUR UNION?

It helps to improve **energy security** in the Baltic sea region and contributes to **cutting-edge research** in health.

FLAGSHIP EXAMPLES

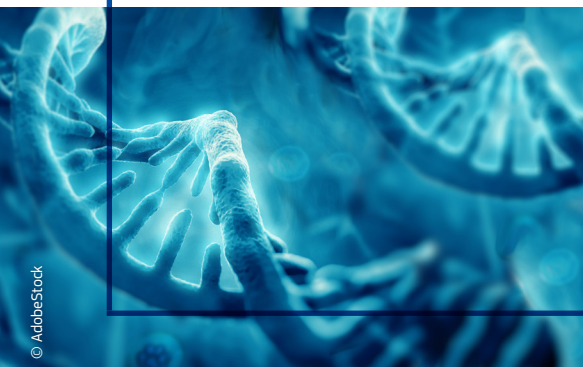
Enhancing the security and stability of the electricity system in the EU



Lithuania and its Baltic neighbours are disconnecting from the Russian-controlled electricity grid and joining the European grid. The Plan has helped install **200 megawatts of energy storage capacity** to:

- ▶ Make the energy system of the whole Baltic region more secure and stable;
- ▶ Provide an instant back-up of electricity in case of power cuts.

EU cross-border project “1+ Million genomes”



The 1+ Million Genomes initiative aims to enable secure access to genomics and clinical data across Europe for better research, personalised healthcare and health policy-making. Lithuania will:

- ▶ Complete 1,570 genome sequencing tests;
- ▶ Update the infrastructure and lab equipment for collecting, storing and analysing the genomic data.

For more information: [Lithuania's recovery and resilience plan — European Commission \(europa.eu\)](https://europa.eu)