



Recovery and Resilience Facility

Horizontal observations on the national recovery and resilience plans



European Parliament RRF Working Group, 07-07-2021

State of play – Submissions of National plans

12 Plans before or on 30 April

Portugal
Spain
France
Germany
Slovakia
Latvia
Denmark
Greece
Luxembourg
Austria
Italy
Belgium

12 Plans submitted after 30 April or with an extension request

Poland*
Slovenia*
Croatia*
Hungary
Cyprus
Lithuania
Finland*
Sweden*
Ireland
Czechia
Romania*
Estonia*

3 Other plans

Malta
Bulgaria
Netherlands

* Plans submitted with an extension of the assessment period

State of play – Adoption of National plans

- To date, the European Commission has **assessed 14 plans**
 - PT, ES, EL, DK, LU, SK, AT, DE, LV, IT, FR, BE, SI, LT
 - More to come in the next days
- 12 plans scheduled for **adoption by Ecofin council** on 13 July 2021



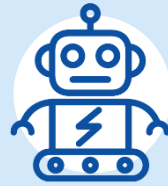
Coverage of six pillars

Each of the 14 adopted plans covers all of the six policy pillars to varying degrees.



Green transition

- Renovation and energy efficiency
- Sustainable mobility
- Renewable energy and networks
- Afforestation measures
- Waste and water management



Digital transformation

- Digitalisation of the public administration and of businesses
- Cloud services
- Digital skills
- Broadband roll-out



Smart, sustainable and inclusive growth

- Promote research and innovation
- Investment bottlenecks, Simplification
- Reforming public procurement rules
- Highly qualified, competitive workforce



Social and territorial cohesion

- Pension reforms
- Active labour market policies
- Reforms to tackle segmentation in the labour market
- Vocational education and training



Health, and economic, social and institutional resilience

- Resilient health systems
- Improving the justice system and public administration
- Fiscal reforms and fight against corruption and money laundering



Policies for the next generation

- Reform of the education system
- Reform of university governance
- High quality accessible lifelong education
- Early childhood care

Coverage of CSR

Broad Category	Public finances & taxation						Financial sector				Labour market, education & social policies							Structural policies					Public administration & business environment										
Policy areas	Fiscal policy & governance	Sustainability of public finances	Tax burden on labour	Broaden tax bases	Reduce the debt bias	Tax evasion, tax adm. & tax avoidance	Financial services	Housing market	Access to finance	Private indebtedness	EPL & labour contracts	Unemployment benefits	Active labour market policies	Incentives to work, job creation, market part.	Wages & wage setting	Childcare	Health & long-term care	Poverty reduction & social inclusion	Education	Skills & life-long learning	Research & innovation	Competition & regulatory framework	Competition in services	Telecom, postal & local public services	Energy, resources & climate change	Transport	Business environment	Insolvency framework	Public administration	State-owned enterprises	Civil justice	Shadow economy & corruption	
AT							done																										
BE																																	
DE																																	
DK																																	
EL		done		done		done	done	done	done	done	done	done	done	done	done	done	done	done	done	done	done	done	done	done	done	done	done	done	done	done	done	done	done
ES																																	
FR				done			done	done		done								done															
IT																																	
LT							done	done																									
LU	done																																
LV								done			done		done																				
PT								done																									
SI																																	
SK										done																							

done all CSRs of this policy area have been assessed as "significant progress" or "full implementation" prior to the RRP submission

Green transition in the RRP



- 37% target and adequate expenditure tracking

- Tagging Annex (SWD)

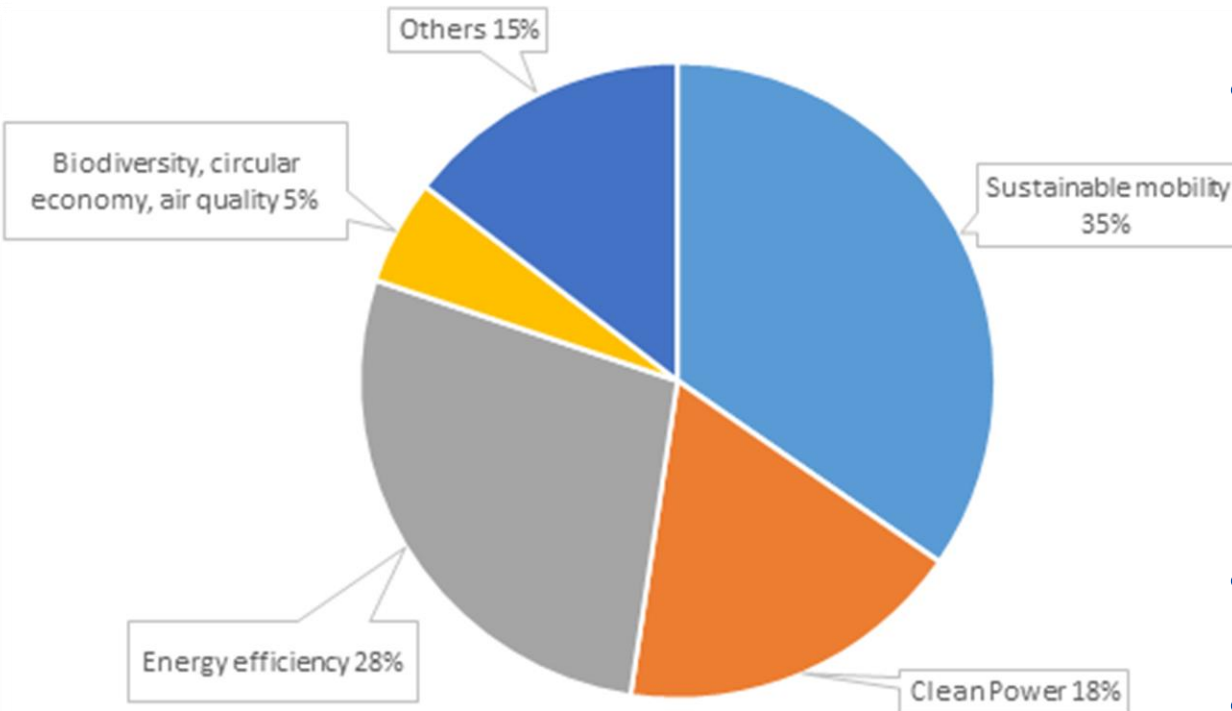
- Respect of the **Do No Significant Harm Principle**

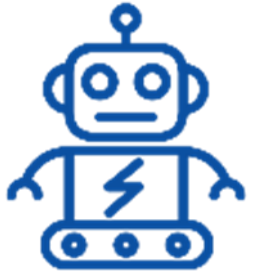
- Safeguards included in descriptions of measures

- Milestone/Targets for implementation where necessary (CiD)

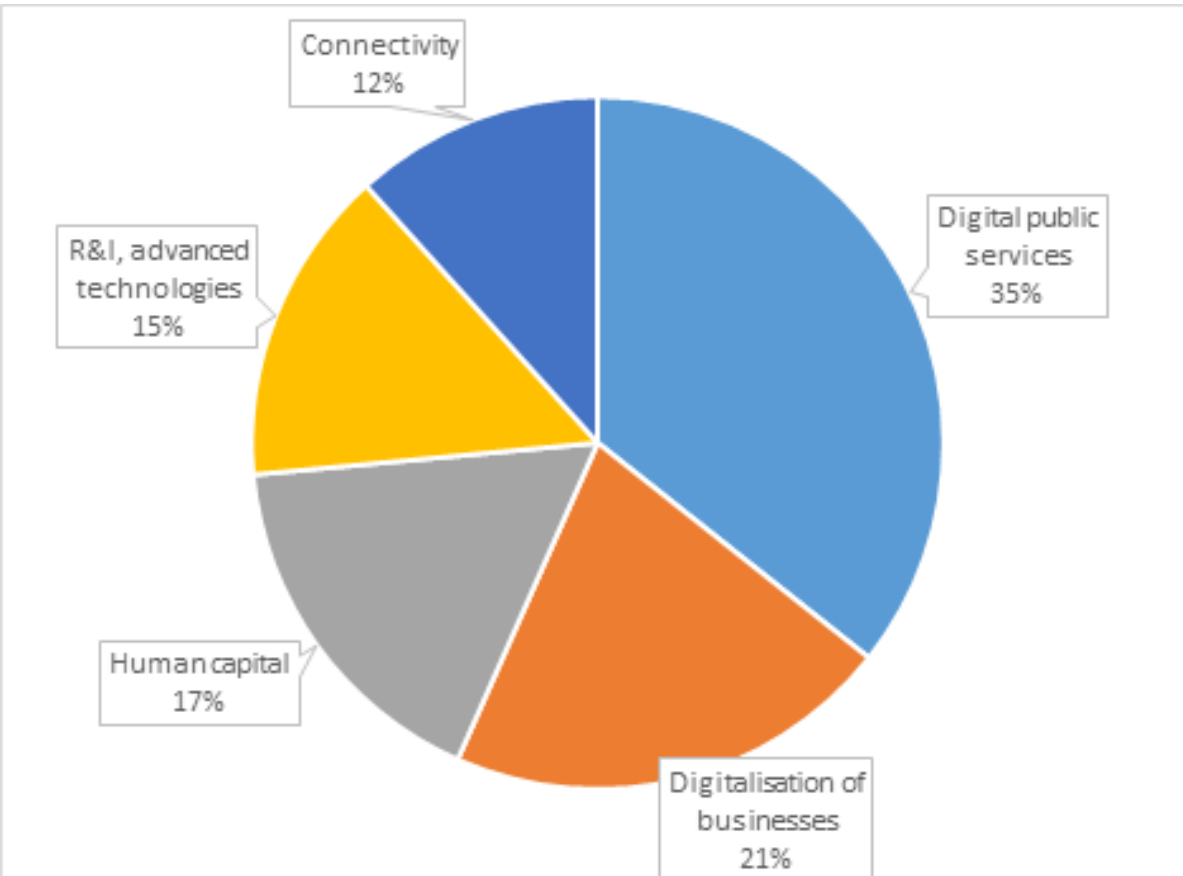
- **Enabling reforms:** e.g. permitting, taxation

- Dedicated **Biodiversity** measures in most plans (e.g. marine protected areas, resilience of forests, organic farming)



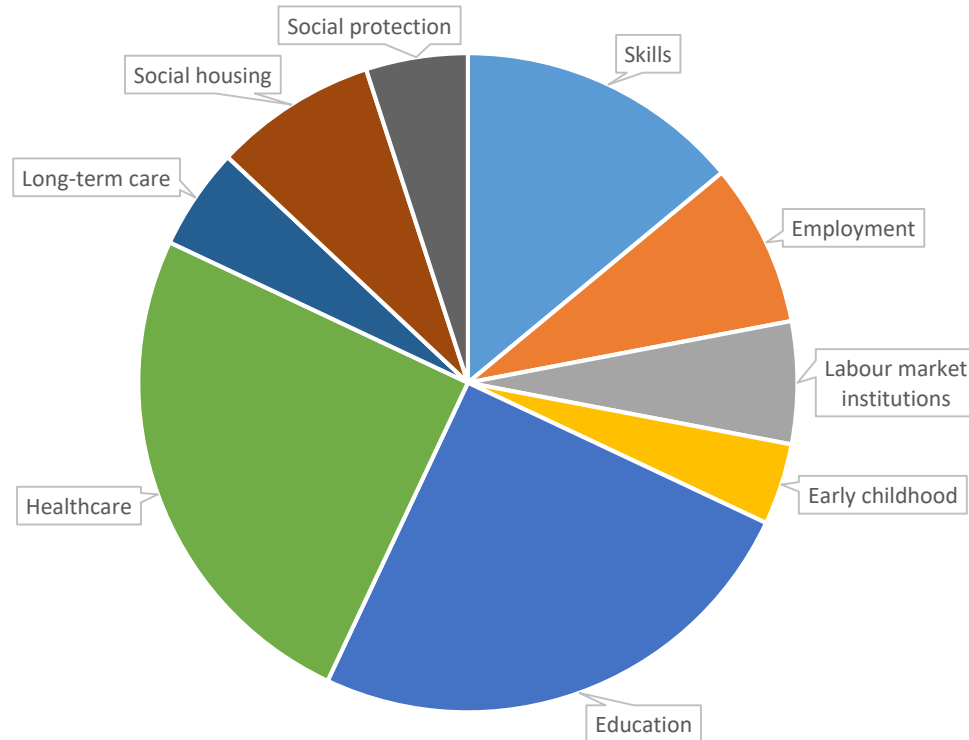


Digital transformation in the RRP



- 20% target and adequate expenditure tracking
- Security Self-assessment in 9 out of 14 plans
 - 5 G & digital capacities
- **Enabling reforms:** e.g. removing barriers to 5G deployment, public administration
- Significant **investments in advanced technologies and capacities:** microelectronics, 5G, quantum communication infrastructure, AI, blockchain, cloud.

Economic, Social and Institutional Resilience



Over 20% in human capital

- Far reaching **social reforms**
 - Social safety nets, social housing and minimum income; labour market reforms
- **Public administration and Justice reforms**
- Strong focus on improving **business environment**
- Measures supporting **equality mainstreaming**
 - Enhance early childcare to remove restrictions on women's participation in the labour market
 - Active labour market measures provide upskilling and reskilling to older workers.

What's next?

- The revised drafts **Delegated Acts (DA)** on: (i) the scoreboard & common indicators and (ii) methodology on reporting on social expenditures will be presented in the expert group (EP observer). We plan to adopt the final DAs (after feedback and objection periods) in Fall.
- Remaining **RRPs to be adopted** in two groups:
 - Group 1: Still to be adopted before the summer recess
 - Group 2: As of September
- **Payment request**: first one expected by ES



Thank you!