

28 SEPTEMBER
2020



OUR BALTIC CONFERENCE

NOW VIRTUAL

JOIN US ONLINE

#OurBaltic

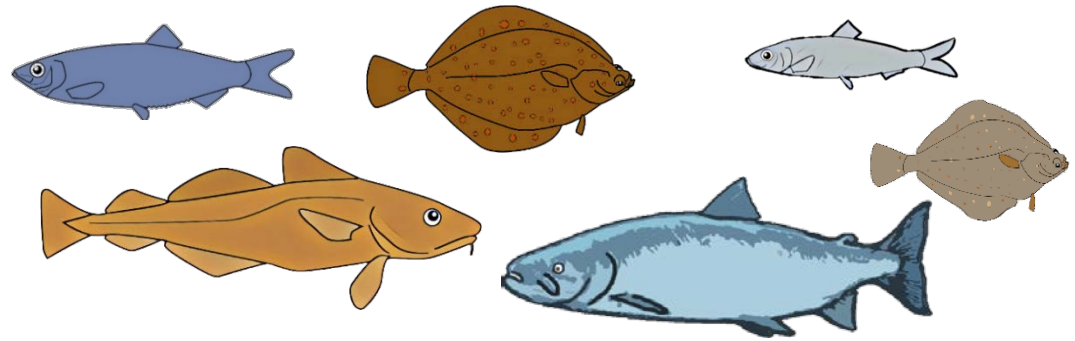
The State of Fisheries What do we know?

Mark Dickey-Collas
ICES



#OurBaltic

Species fished in the Baltic Sea



Commercial large scale fleet – herring, sprat, cod, flatfish, salmon

Commercial small scale coastal – cod, herring, eel, flatfish, whitefish, sea trout, salmon, perch, pike, pikeperch, smelt, roach, bream, round goby

Recreational – cod, salmon, sea trout, perch, pikeperch, flatfish, whitefish, bream

Society



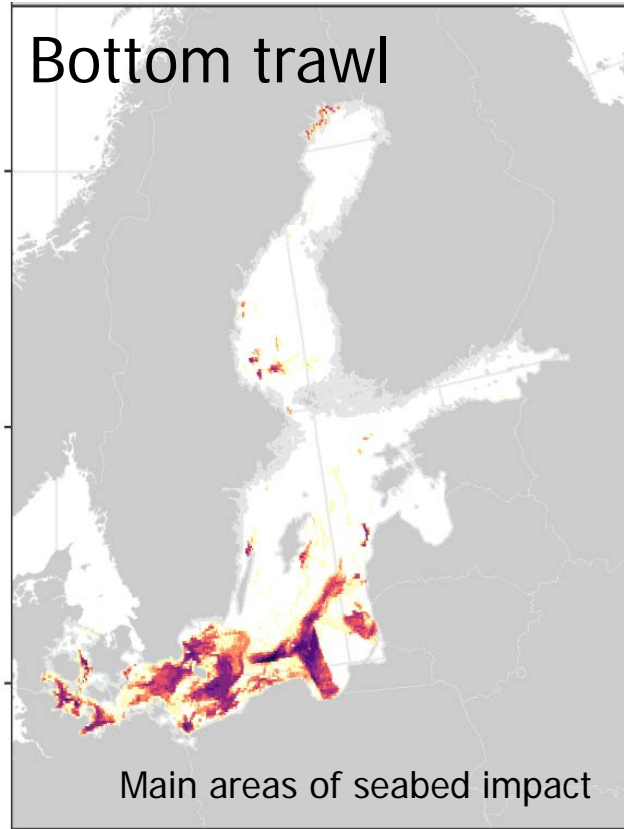
	vessels	crew	full time equivalent	weight of landings	value of landings
Total number	5 900	8 533	4 422	632 m t	€ 226 m
% small scale coastal	92	77	61	7	22
% large scale	8	23	39	93	78

Recreational = ???

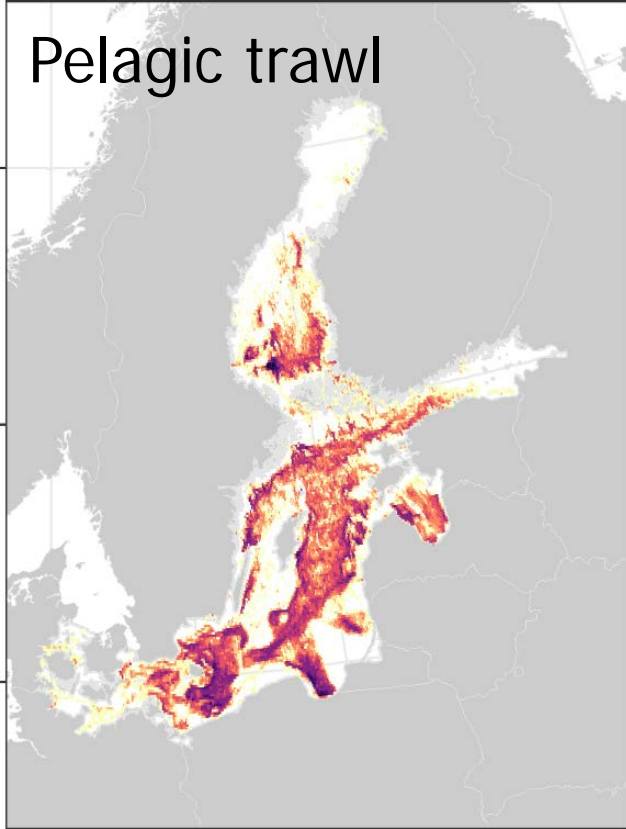
2017 data, source STECF 2019, m=million, t=tonne

Where do people fish?

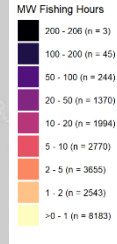
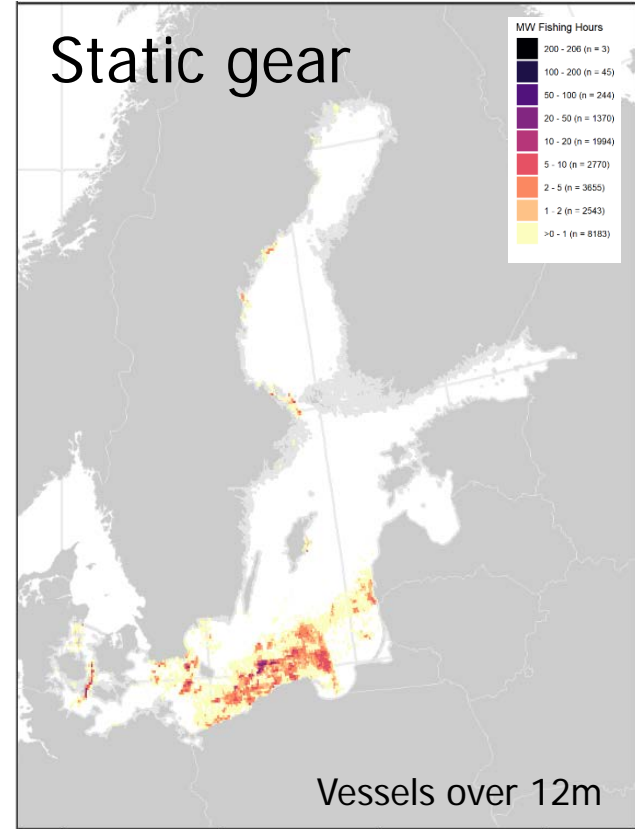
Bottom trawl



Pelagic trawl

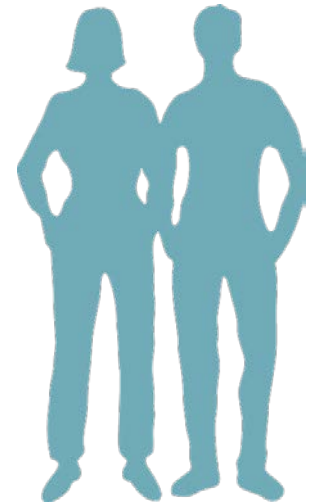


Static gear

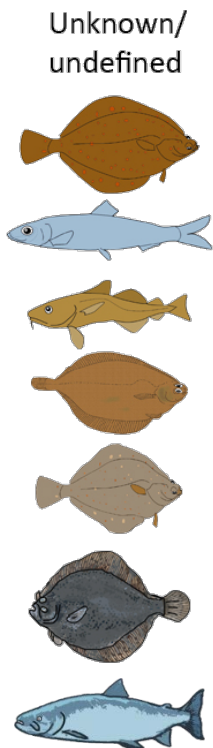
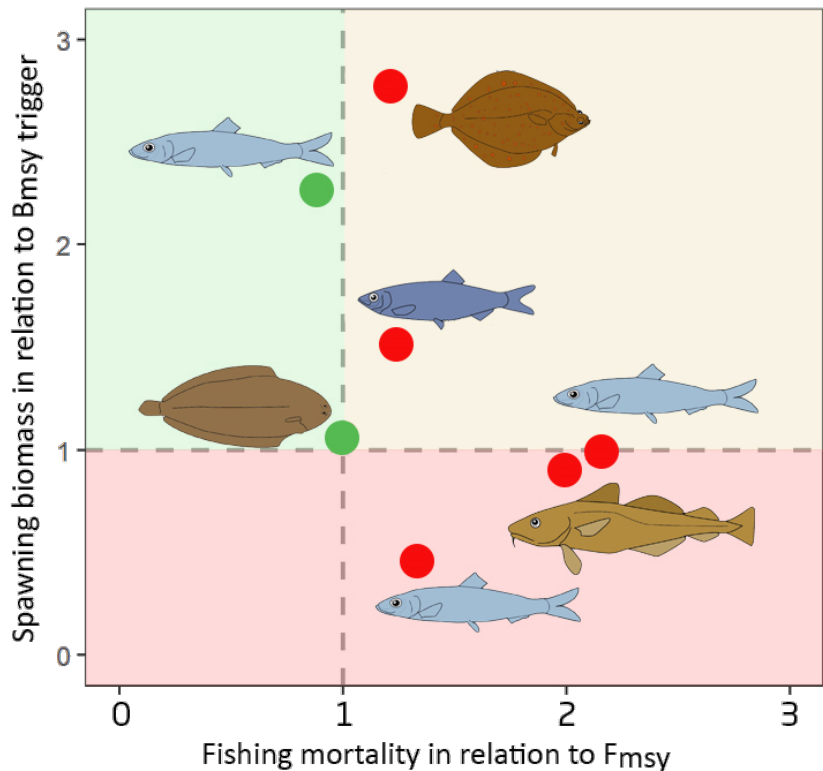


Management

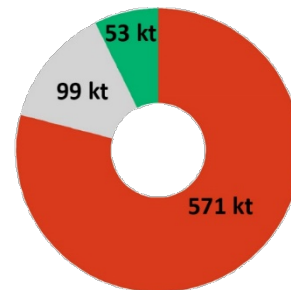
- **CFP EU Multi Annual Plans (MAPs)**
- **National legislation – coastal waters & recreational**
- **Eel management plan**
- **Salmon management plan (new on route)**
- **Ecosystem Approach: MSFD, Habitat & Birds directives**
- **HELCOM Baltic Sea Action Plan (BSAP)**



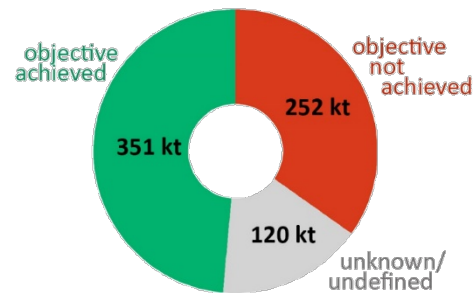
State of fish stocks in 2019 in relation to management objectives



Fishing mortality
in relation to Fmsy



Spawning biomass
in relation to Bmsy trigger



Total catch in 2019 = 722 kt

Fisheries impact the ecosystem

Examples:

Gillnets pose a threat through bycatch to 3 bird species:

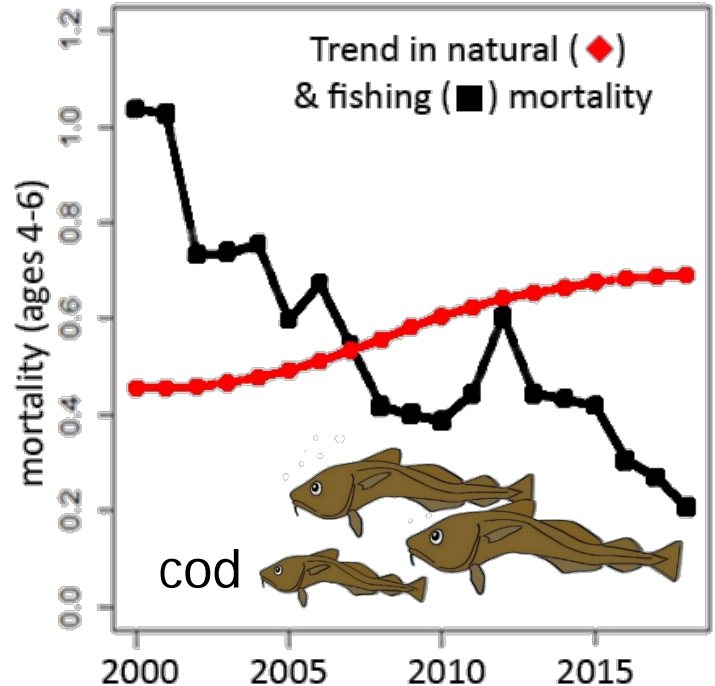
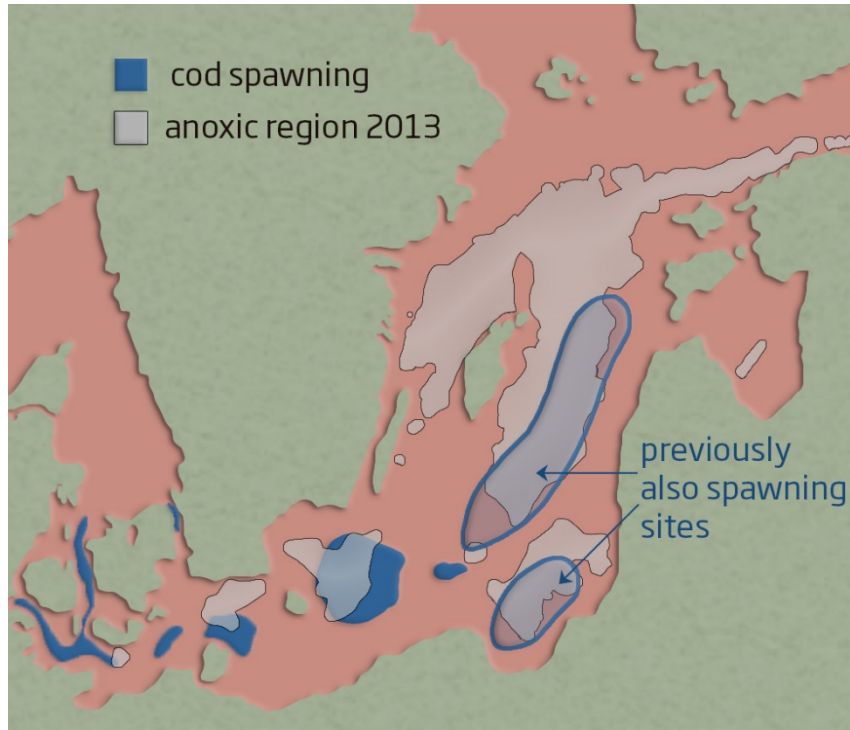
- greater scaup duck
- common guillemot
- long-tailed duck



Also gillnets, trammelnets & semi-driftnets to harbour porpoise

impact of bottom trawling on seabed

Health/state of ecosystem impacts fisheries



The state of Baltic fisheries

What do we know?

- **Fish stocks are in a mixed state, in relation to fisheries management objectives**
- **We know little about recreational fisheries**
- **Fisheries management is more challenging when ecosystem is changing or ecosystem health is poor**

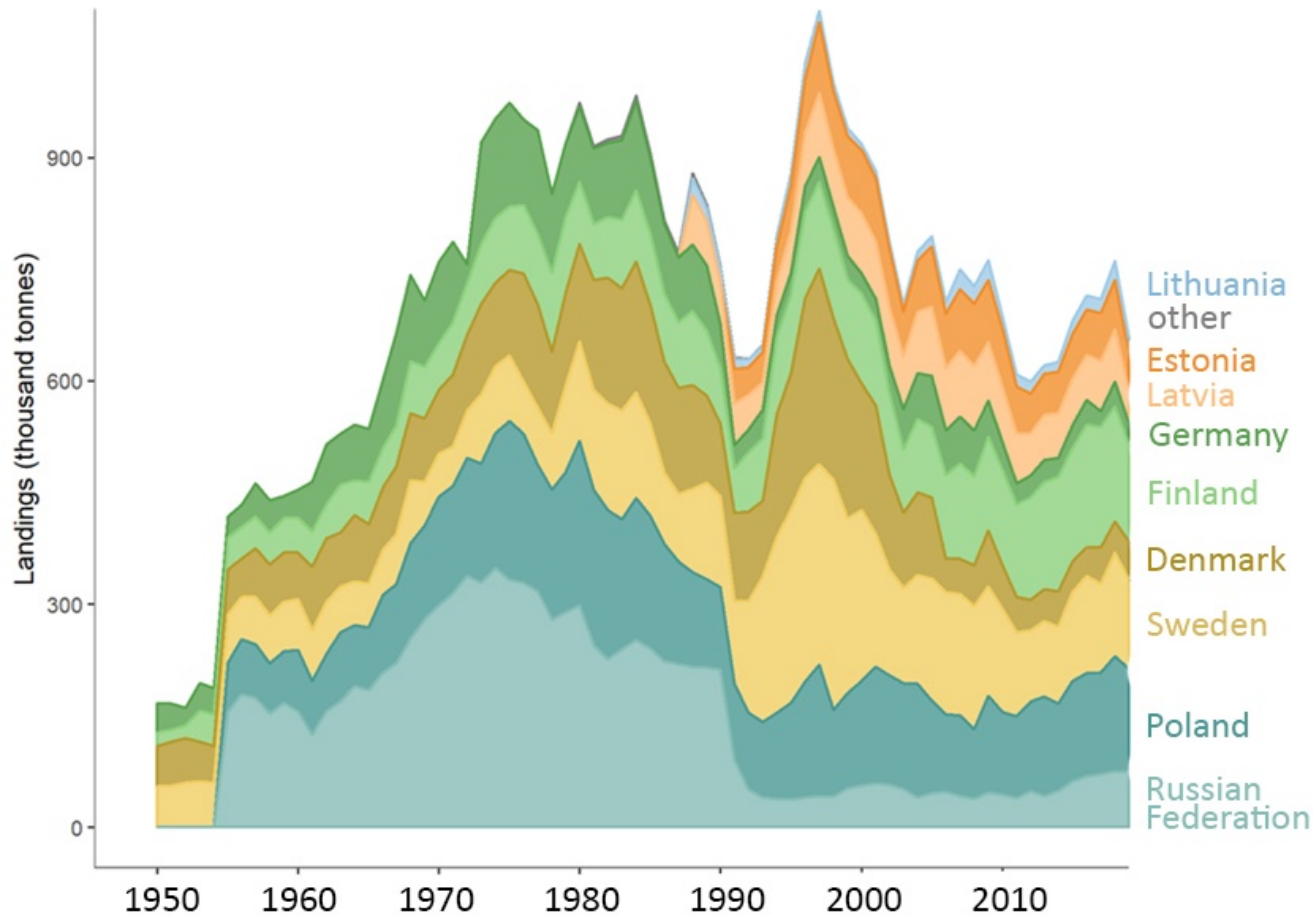
THANK YOU



European
Commission

#OurBaltic

Landings over time



Landings in 2019

sprat	304 kt
herring	303 kt
flounder	21 kt
cod	26 kt
plaice	6 kt
salmon	1 kt
eel	0.8 kt