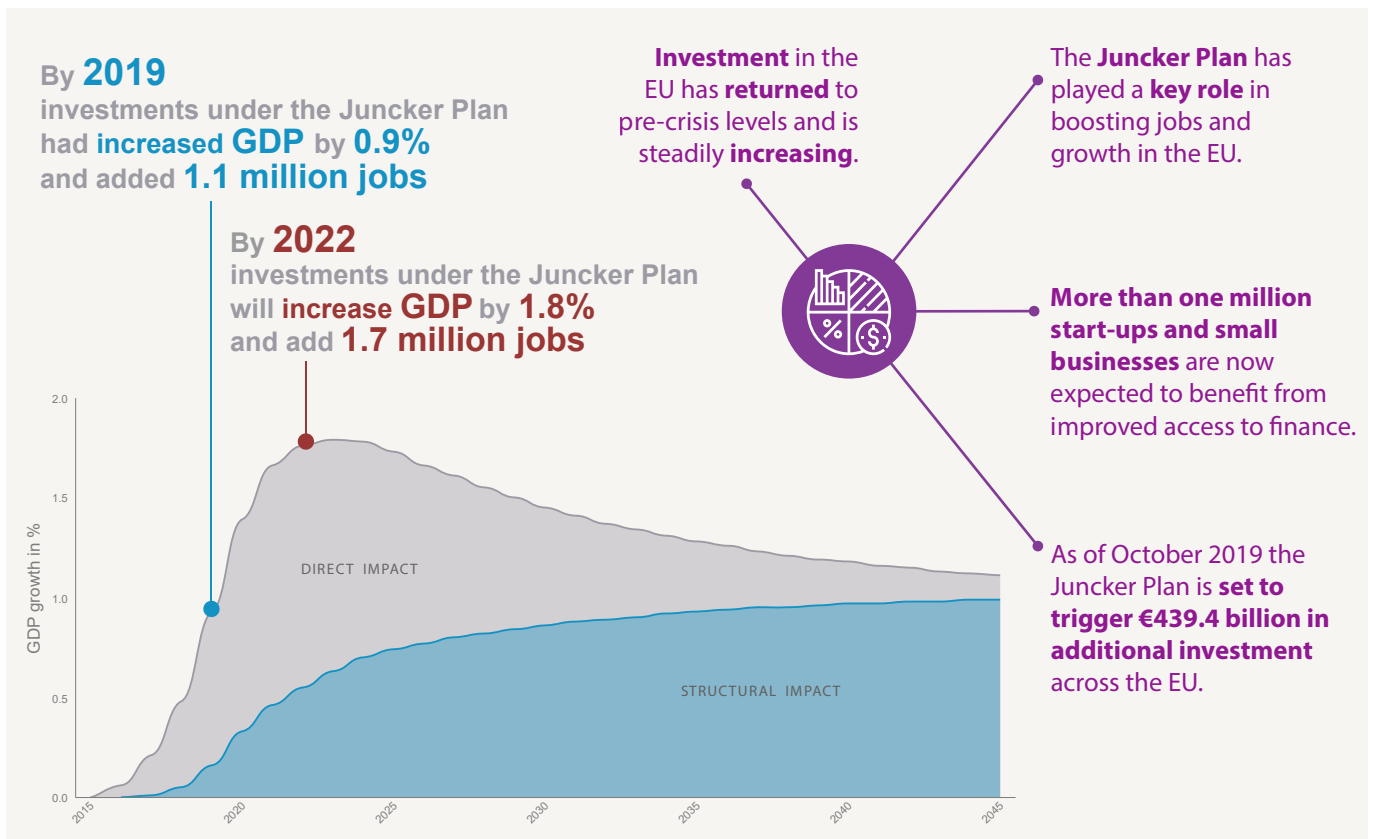




Investment Plan for Europe
October 2019

THE JUNCKER PLAN'S IMPACT ON JOBS AND GROWTH

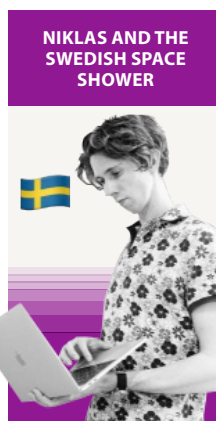
Macroeconomic impact of the Juncker Plan



1.1 million people in work:
This is equivalent to the
population of Cologne

Want to meet some people who got a job thanks to Juncker Plan financing?

www.eib.org/en/stories/series/i-got-a-job





Investment Plan for Europe
October 2019

THE JUNCKER PLAN'S IMPACT ON JOBS AND GROWTH

Juncker Plan's impact in our daily lives



531,000
affordable flats built
or renovated



1,039,000
start-ups and small businesses
can access fresh financing



28.3 million
smart energy meters
installed



8 million
very high speed broadband
lines activated



Better waste treatment for
33.3 million
people



Renewable energy for
10.4 million
households

5 standout Juncker Plan moments

Seit der weltweiten Wirtschafts- und Finanzkrise leidet die EU unter einem niedrigen Investitionsniveau. Deshalb sind gemeinsame und koordinierte Anstrengungen auf europäischer Ebene erforderlich.

rückläufige Entwicklung aufzufangen und neuem Wachstum in Europa den Weg zu ebnen. Es stehen Ressourcen in angemessener Höhe zur Verfügung, die zur Förderung von Investitionen mobilisiert werden müssen. Eine europäische Plattform für Wachstum auf Knopfdruck und das europäische Investitionsportal, die durch technische Maßnahmen zur Verwirklichung von Investitionsprojekten beitragen werden, werden gemeinsam mit der Kommission und Patentrezepten gibt

The European Fund for Strategic Investments – the EFSI – is the central pillar of the Investment Plan for Europe. It aims to tackle the lack of confidence and investment which resulted from the economic and financial crisis and to make use of liquid resources from financial institutions and individuals at scale.

The Commission works together with its strategic partner, the European Investment Bank (EIB) Group. The EFSI supports investments in areas such as infrastructure, efficiency, research and innovation, health, digital technology, agriculture, education, and social projects. It also helps small businesses to start up, to grow and to expand by providing risk finance.

Juncker Plan supports **LARGEST ONSHORE WIND FARM IN EUROPE**

Juncker Plan finances groundbreaking cancer research

Successor to Juncker Plan **AGREED BY PARLIAMENT AND COUNCIL: InvestEU**

GREECE maintains its position as **TOP BENEFICIARY RELATIVE TO GDP**

JUNCKER PLAN EXCEEDS ORIGINAL €315 BILLION INVESTMENT TARGET

Le plan d'investissement poursuit trois axes principaux: éliminer les obstacles à l'investissement; apporter de la visibilité et une assistance technique aux projets d'investissement; mieux utiliser les ressources financières. Il compte trois piliers.

The Commission works together with its strategic partner, the European Investment Bank (EIB) Group. The EFSI supports investments in areas such as infrastructure, efficiency, research and innovation, health, digital technology, agriculture, education, and social projects. It also helps small businesses to start up, to grow and to expand by providing risk finance.

as such as infrastructure, energy efficiency and renewable energy, research and innovation, environment, agriculture, digital technology, education, health and social projects. It also helps small businesses to start up, to grow and to expand by providing risk finance.