



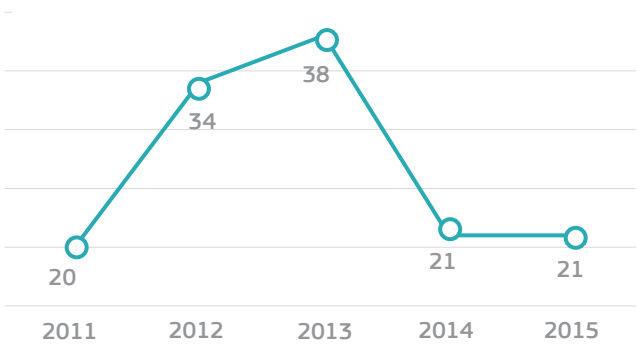
European Commission

Monitoring the Application of European Union Law

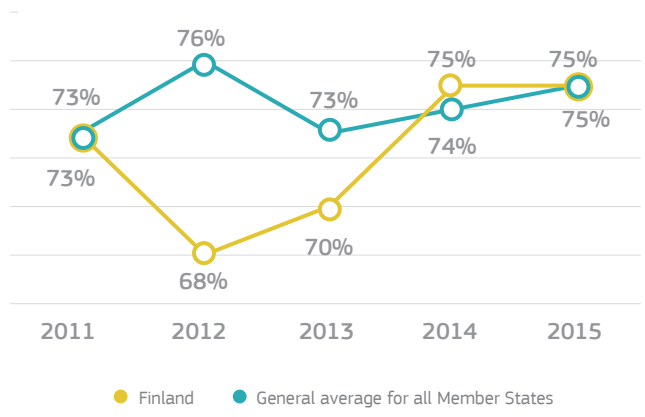
Annual Report 2015

New complaints against Finland almost halved in 2015, falling back to their 2012 level, the lowest in the past five years. The number of new EU Pilot files held steady at less than half the levels seen in 2012 and 2013. The downward trend in open infringement cases since 2011 came to an end with a slight rise in 2015. New infringement cases for late transposition remained at less than one third of their 2011 peak level.

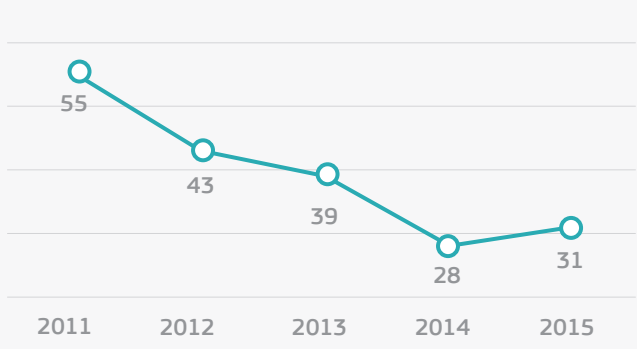
New EU Pilot files opened



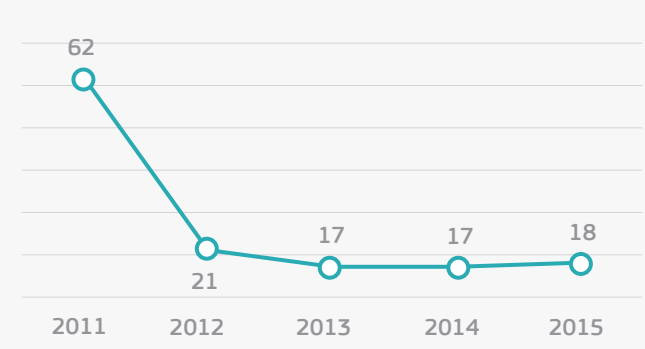
EU Pilot files: evolution of the resolution rate



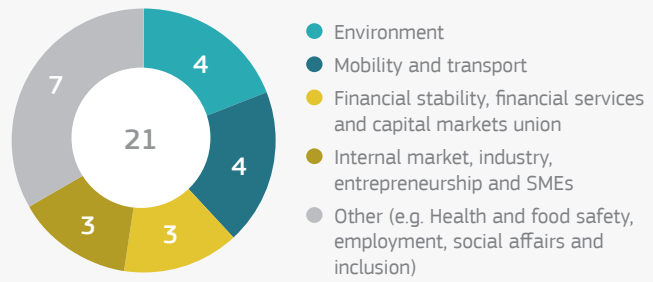
INFRINGEMENT CASES
Infringement cases open on 31 December



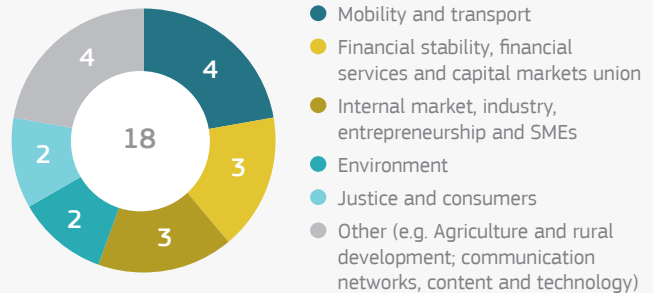
TRANSPPOSITION OF DIRECTIVES
New late transposition infringement cases



21 new infringement cases opened in 2015: main policy areas



18 new late transposition infringement cases opened in 2015: main policy areas





In preliminary rulings, the Court ruled that:

- the Posted Workers Directive does not preclude a calculation of the minimum wage for hourly work and/or for piecework which is based on categorising employees into pay groups, provided that the calculation and categorisation are carried out in accordance with rules that are binding and transparent. It is for the national court to verify whether this is the case;¹
- discriminatory measures on distance selling and transport of alcoholic beverages can be justified if they are appropriate and cannot be achieved by less restrictive measures;²
- complex contractual arrangements can be classified as service proceedings so long as the relevant contracting authority has transferred to the concession holder all, or a significant share of, the risk which it faces.³

¹ Sähköalojen ammattiliitto, [C-396/13](#) and Court press release No [17/15](#).

² Visnapuu, [C-198/14](#).

³ Kansaneläkelaitos, [C-269/14](#).