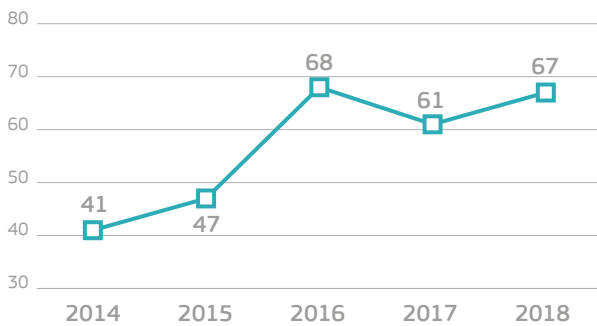


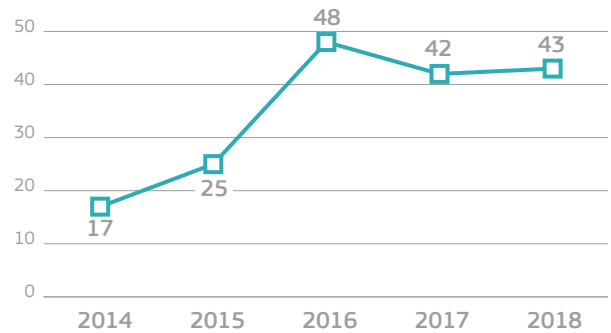
Monitoring the Application of European Union Law

Annual Report 2018

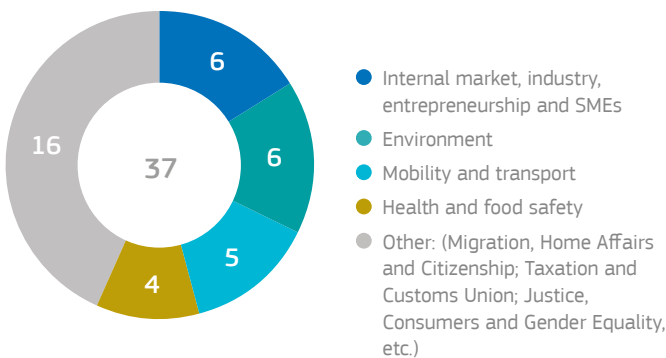
Infringement cases open as of 31 December 2018



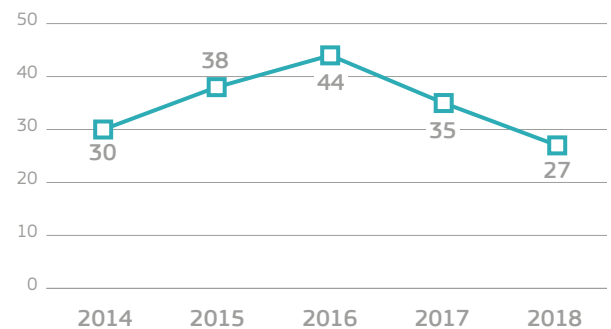
Late transposition¹ infringement cases open as of 31 December 2018



New infringement cases opened in 2018: main policy areas



New late transposition infringement cases opened in 2018



¹ Number of infringement cases due to failure to implement an EU Directive into national law on time.