

# BELGIUM'S RECOVERY AND RESILIENCE PLAN

#NEXTGENEU | FEBRUARY 2024

## KEY FIGURES

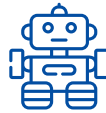
**EUR 5 billion** in grants  
*1 % of GDP<sup>1</sup>*

**EUR 264 million**  
*in loans*

**29%** value of  
**payments requested**  
*corresponding to  
9% of milestones/targets*



**Climate Target**  
**51 %**



**Digital Target**  
**27 %**



**Social Spending**  
**31 %**

## WHAT ARE THE MAIN CHARACTERISTICS OF THE BELGIAN PLAN?

### GREEN

Belgium's Plan dedicates over EUR 1 billion to energy-efficient renovations of buildings and invests massively in sustainable mobility and emerging energy technologies to green Belgium's industry.

### DIGITAL

The Plan invests heavily in digital public administration and justice, as well as in digital education and inclusion. It also promotes cybersecurity, 5G and fibre coverage.

### INNOVATIVE

Belgium is strengthening its position as an innovation leader with investments in R&D. Reskilling and upskilling measures will further boost productivity and innovation.

<sup>1</sup> Based on GDP in current prices for 2021.

## HOW DOES THE BELGIAN PLAN HELP CITIZENS?

It helps improve people's **quality of life** by investing in **social infrastructure**, contributing to the reduction of **fossil energy consumption, pollution, and congestion**, boosting skills and employability of vulnerable groups and enabling inclusive **education and training**.

### FLAGSHIP EXAMPLES

#### Investments in energy efficiency



The **Plan boosts the renovation wave** across the country in order to reduce Belgium's strong reliance on imported fossil fuels, to lower energy consumption and to reduce emissions, by funding works on:

- ▶ Private houses through progressive subsidy schemes for renovation dependent on household income.
- ▶ Greening social housing.
- ▶ Public buildings of federal, regional and local authorities.
- ▶ Sports and cultural facilities.
- ▶ Crèches, schools and universities.

#### Life-long learning



The plan helps tackle low labour market participation, increasing labour shortages and skills mismatches, as well as a low participation rate in adult learning in Belgium.

As part of the Plan Belgium has implemented a reform:

- ▶ promoting **life-long learning** by ensuring that workers can benefit from **training to acquire skills** in line with labour market needs.
- ▶ aimed at improving training for unemployed workers to **facilitate reintegration in the labour market**.

## HOW DOES THE BELGIAN PLAN HELP BUSINESSES?

It tackles key challenges for businesses' competitiveness and resilience, including **skills shortages** and **cybersecurity**.

### FLAGSHIP EXAMPLES

#### Strong and competitive SMEs in the digital world



Small and medium-sized enterprises (SMEs) are often more vulnerable to emerging cyber threats. The Plan **helps Belgian SMEs to increase their cyber resilience** by financing:

- ▶ Free **cyber-scans** to identify areas where cyber resilience of firms can be improved.
- ▶ A **“spear warning” system** to alert organisations of detected cyber-attacks.
- ▶ **Cyber maturity evaluations** and recommendations to businesses.
- ▶ **Awareness raising campaigns** on cyber security risks.

#### A skilled workforce for an innovative economy



The Plan boosts the competitiveness of the Belgian **biotech and biopharma sectors**, by addressing the **growing need for a skilled workforce**.

- ▶ Thanks to the Plan, a new 5,500 m<sup>2</sup> ‘EU Biotech Campus’ is under construction near Charleroi.
- ▶ The new centre will focus on developing skills and on delivering training programmes.

## HOW DOES THE BELGIAN PLAN STRENGTHEN OUR UNION?

It invests in charging infrastructure to **facilitate cross-border electric mobility** and supports the creation of a North Sea hub to **increase Europe's energy independence**.

### FLAGSHIP EXAMPLES

#### Charging stations across Belgium



Belgium is a key transport hub in Europe and needs to accelerate the deployment of charging infrastructure for electric vehicles. The Plan supports the **installation of over 70,000 charging stations** throughout the country, thus **boosting clean mobility across the EU**, via:

- ▶ A federal tax incentive to install private and semi-public charging stations.
- ▶ Regional measures to stimulate the deployment of public and semi-public charging stations.

#### Offshore energy island



The Plan supports the development of an offshore energy hub in the Belgian part of the North Sea, a first of its kind worldwide. This artificial island will be equipped with infrastructure to enable the **connection of a new offshore wind park** to the onshore electricity grid. This will **more than double Belgium's offshore wind energy capacity**. The energy island will also make it possible to **connect with other countries** around the North Sea, thereby contributing to reducing Europe's reliance on imported fossil fuels, increasing our security and greening our economy.

For more information: [Belgium's recovery and resilience plan - European Commission \(europa.eu\)](https://european-council.europa.eu/media/en/press-communications/infographic/Item?id=12345)