

BELGIUM'S RECOVERY AND RESILIENCE PLAN

#NEXTGENEU | FEBRUARY 2024

KEY FIGURES

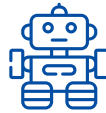
EUR 5 billion in grants
1 % of GDP¹

EUR 264 million
in loans

29 % value of
payments requested
*corresponding to
9 % of milestones/targets*



Climate Target
51 %



Digital Target
27 %



Social Spending
32 %²

WHAT ARE THE MAIN CHARACTERISTICS OF THE BELGIAN PLAN?

GREEN

Belgium's Plan dedicates over EUR 1 billion to energy-efficient renovations of buildings and invests massively in sustainable mobility and emerging energy technologies to green Belgium's industry.

DIGITAL

The Plan invests heavily in digital public administration and justice, as well as in digital education and inclusion. It also promotes cybersecurity, 5G and fibre coverage.

INNOVATIVE

Belgium is strengthening its position as an innovation leader with investments in R&D. Reskilling and upskilling measures will further boost productivity and innovation.

¹ Based on GDP in current prices for 2021.

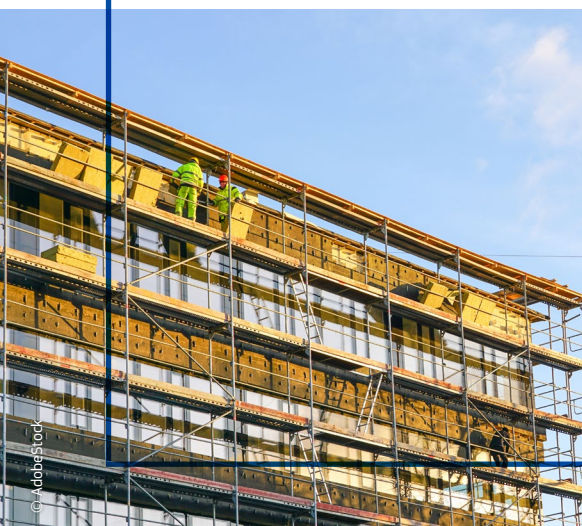
² Data is based on the methodology for reporting social expenditure for the Recovery and Resilience Scoreboard ([Delegated Regulation 2021/2105](#)) and reflect the Member State's original national recovery and resilience plan (Plan). In the context of the revision of Member States' plans, the share of social expenditure might be subject to change.

HOW DOES THE BELGIAN PLAN **HELP CITIZENS?**

It helps improve people's **quality of life** by investing in **social infrastructure**, contributing to the reduction of **fossil energy consumption, pollution, and congestion**, boosting skills and employability of vulnerable groups and enabling inclusive **education and training**.

FLAGSHIP EXAMPLES

Investments in energy efficiency



The **Plan boosts the renovation wave** across the country in order to reduce Belgium's strong reliance on imported fossil fuels, to lower energy consumption and to reduce emissions, by funding works on:

- ▶ Private houses through progressive subsidy schemes for renovation dependent on household income.
- ▶ Greening social housing.
- ▶ Public buildings of federal, regional and local authorities.
- ▶ Sports and cultural facilities.
- ▶ Crèches, schools and universities.

Life-long learning



The plan helps tackle low labour market participation, increasing labour shortages and skills mismatches, as well as a low participation rate in adult learning in Belgium.

As part of the Plan Belgium has implemented a reform:

- ▶ promoting **life-long learning** by ensuring that workers can benefit from **training to acquire skills** in line with labour market needs.
- ▶ aimed at improving training for unemployed workers to **facilitate reintegration in the labour market**.

HOW DOES THE BELGIAN PLAN **HELP BUSINESSES?**

It tackles key challenges for businesses’ competitiveness and resilience, including **skills shortages** and **cybersecurity**.

FLAGSHIP EXAMPLES

Strong and competitive SMEs in the digital world



- Small and medium-sized enterprises (SMEs) are often more vulnerable to emerging cyber threats. The Plan **helps Belgian SMEs to increase their cyber resilience** by financing:
- ▶ Free **cyber-scans** to identify areas where cyber resilience of firms can be improved.
 - ▶ A “**spear warning**” **system** to alert organisations of detected cyber-attacks.
 - ▶ **Cyber maturity evaluations** and recommendations to businesses.
 - ▶ **Awareness raising campaigns** on cyber security risks.

A skilled workforce for an innovative economy



- The Plan boosts the competitiveness of the Belgian **biotech and biopharma sectors**, by addressing the **growing need for a skilled workforce**.
- ▶ Thanks to the Plan, a new 5,500 m² ‘EU Biotech Campus’ is under construction near Charleroi.
 - ▶ The new centre will focus on developing skills and on delivering training programmes.

PDF: KA-02-24-240-EN-N ISBN: 978-92-68-12924-1 DOI: 10.2792/020671