

28 SEPTEMBER
2020



OUR BALTIC

CONFERENCE

NOW VIRTUAL

JOIN US ONLINE

#OurBaltic

How is HELCOM coordinating action – and what are the main achievements and challenges?

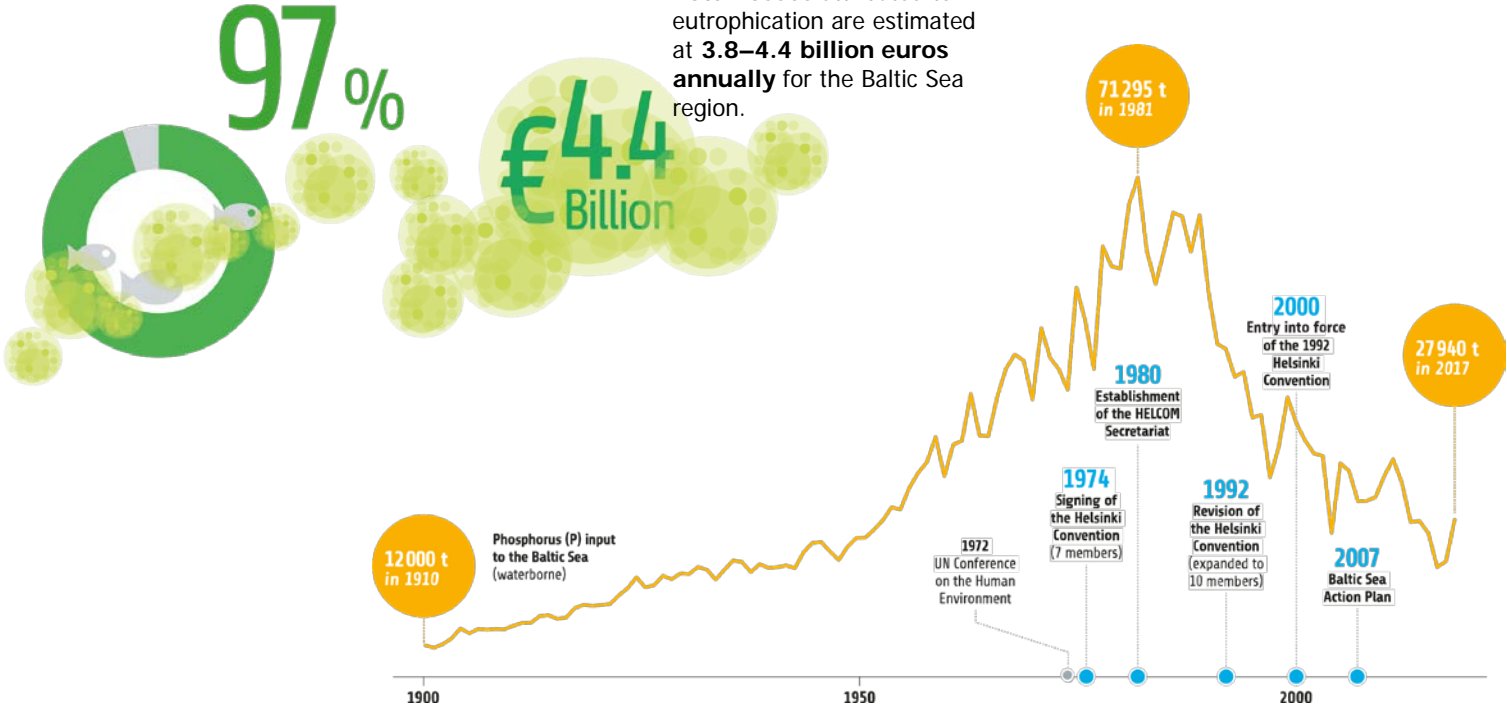


#OurBaltic

Progress yes, but...

97% of the Baltic Sea is affected by eutrophication, causing excessive growth of algae and upsetting biodiversity.

Source: HELCOM State of the Baltic Sea report



Nitrogen and phosphorous inputs to the Baltic Sea

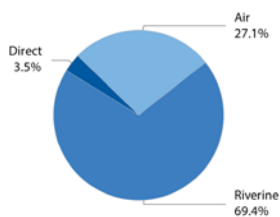


Figure 8. Total Nitrogen input to the Baltic Sea.

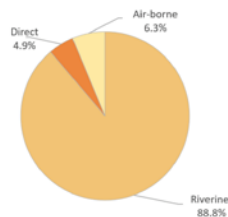


Figure 9. Total Phosphorus input to the Baltic Sea.

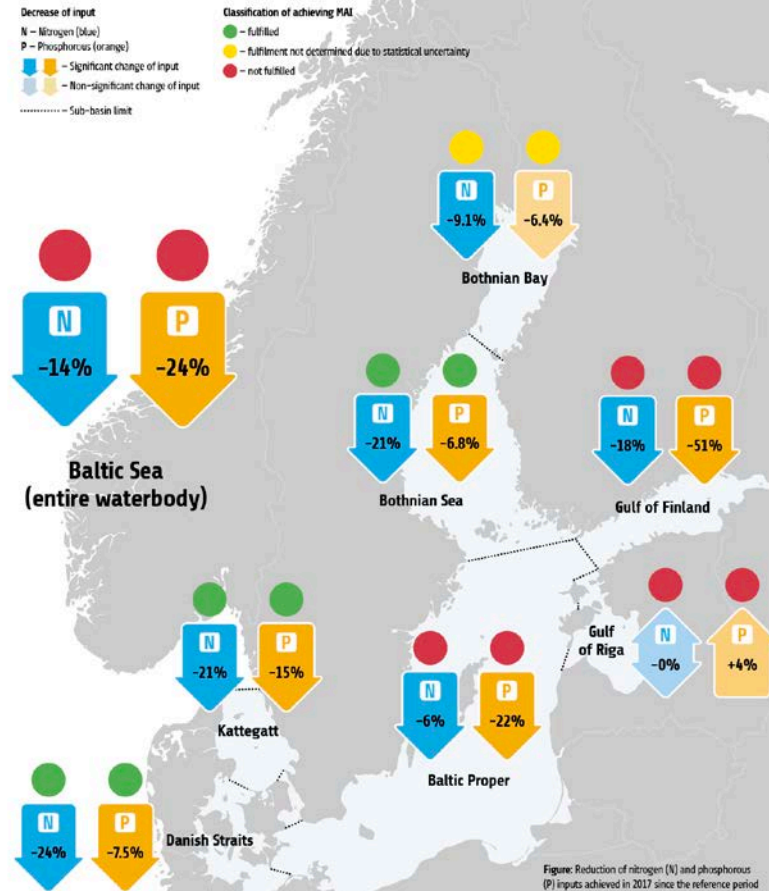


Figure: Reduction of nitrogen (N) and phosphorus (P) inputs achieved in 2017 since the reference period (1997-2003), with classification of achieving MAL



© Seppo Seppänen 2018/seppa.net



THANK YOU



#OurBaltic