



**Next  
GEN  
EU**

# LATVIA'S RECOVERY AND RESILIENCE PLAN

#NEXTGENEU | FEBRUARY 2024

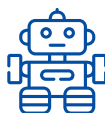
## KEY FIGURES

**EUR 1.97 billion** in grants  
*6.1 % of GDP<sup>1</sup>*

**>40%** value of **payments requested**  
*corresponding to  
23 % of milestones/targets*



**Climate Target**  
**42 %**



**Digital Target**  
**23 %**



**Social Spending**  
**34%<sup>2</sup>**

## WHAT ARE THE MAIN CHARACTERISTICS OF THE LATVIAN PLAN?

### FAIR

The Plan includes important measures to reduce inequalities and regional disparities and strengthen the rule of law, thus contributing to a fairer and more cohesive society.

### GREEN

The Plan allocates 42% of funds to the green transition, including important investments such as the greening of the Riga transport system and energy efficiency schemes in public and private buildings and for businesses.

### TRANSFORMATIVE

The reforms and accompanying investments of the Plan are set to drive fundamental transformations in the education, health and digital sectors.

<sup>1</sup> Based on GDP in current prices for 2021.

<sup>2</sup> Data is based on the methodology for reporting social expenditure for the Recovery and Resilience Scoreboard ([Delegated Regulation 2021/2105](#)) and reflect the Member State's original national recovery and resilience plan (Plan). In the context of the revision of Member States' plans, the share of social expenditure might be subject to change.

## HOW DOES THE LATVIAN PLAN HELP CITIZENS?

The Plan improves people's **quality of life** by transforming the **healthcare and long-term care systems**. It **reduces inequalities** by building **affordable housing** and reducing **energy poverty**.

### FLAGSHIP EXAMPLES

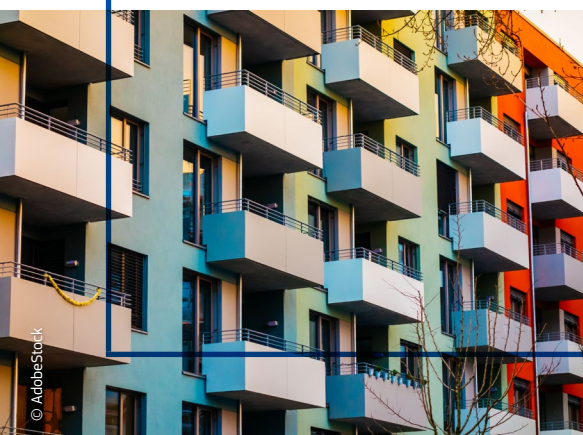
#### Modernising the healthcare system



To improve **access to timely and affordable healthcare and community-based social services**, the Plan puts forward:

- ▶ **Investments in equipment and infrastructure for 10 hospitals and 40 clinics** to increase the availability of integrated and high-quality healthcare services for citizens in Riga and in the regions.
- ▶ A **digital health strategy** that helps develop **digital solutions for** patients and healthcare providers.
- ▶ Creation of new **long-term care** places **close to family settings** including investments for the construction of highly energy-efficient buildings.

#### Affordable housing in nearly zero-energy buildings



To improve access to **affordable and adequate housing**, the Plan puts forward:

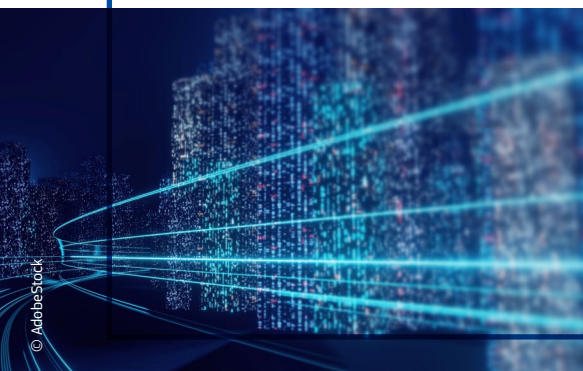
- ▶ **Housing Affordability Strategy 2023-2027** intended to make quality housing more accessible for low-income households, including by supporting for the improvement of the existing housing stock.
- ▶ Construction of at least **300 eco-friendly, high quality and affordable apartments**.

## HOW DOES THE LATVIAN PLAN **HELP BUSINESSES?**

It tackles key challenges for businesses' competitiveness, including **skills shortages** and the **digitalisation and greening of business practices**.

### FLAGSHIP EXAMPLES

#### Increasing digitalisation of SMEs and businesses



- ▶ Establishment of **European Digital Innovation Hubs** to facilitate the digital transformation of Latvian businesses and public sector organisations through **provision of digital maturity tests, consulting services, and specialised training**.
- ▶ **The business support will be provided** through a structure of regional centres, thus contributing to the reduction of regional disparities.

#### Financing for energy efficiency and public transport system improvements



To increase the resilience of Latvian businesses and facilitate their green transition, **the Plan supports**:

- ▶ investments in renovation of buildings, energy efficient equipment, renewable energy technologies and zero-emission vehicles.
- ▶ investments in the development of products and technologies, including industrial research, experimental development and feasibility studies for a low carbon economy.

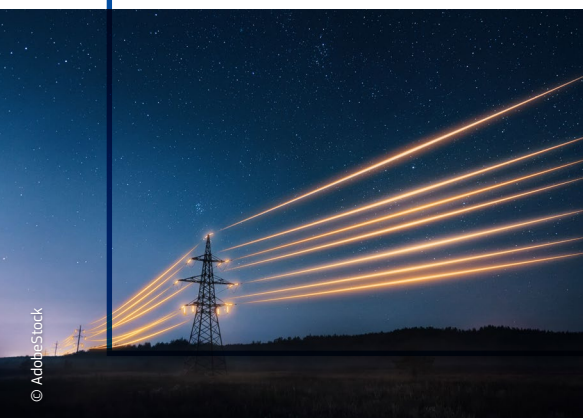
These investments are expected to strengthen **competitiveness** and **export capacity**.

## HOW DOES THE LATVIAN PLAN **STRENGTHEN OUR UNION?**

It contributes to **strengthening the security of electricity supply** and to **fostering competitiveness** by reforming the national higher education system.

### FLAGSHIP EXAMPLES

#### Increased security and stability of electricity supply



To **increase security and stability of electricity supply**, the Plan finances:

- ▶ **Installation of a 60 megawatt Battery Energy Storage System** in the city of Rēzekne. The investment **complements a flagship cross-border project** that helps decouple the Baltic states' electricity networks from Russia.
- ▶ **Upgrading the electricity transmission and distribution networks.**

#### Reforming the national higher education system



Latvia's Plan fosters **competitiveness by supporting its talents**. To strengthen **human capital and** promote **research and innovation**, the Plan includes:

- ▶ a **fundamental reform of the higher education system** that will act upon **three priorities**: governance, funding and human resources.
- ▶ **investments in research and academic development.**

For more information: [Latvia's recovery and resilience plan — European Commission \(europa.eu\)](https://european-council.europa.eu/media/en/press-operations/infographic-128896.attachments)